



සායනය
- Panadura
සායනය
- Panadura
සායනය
- Panadura

ශ්‍රී සුමංගල විද්‍යාලය - පානදුර
Sri Sumangala College - Panadura

සායනය
- Panadura
සායනය
- Panadura
සායනය
- Panadura

ප්‍රථම වාර පරීක්ෂණය - 2020 මාර්තු
1st Term Test - March 2020

ශ්‍රේණිය } 10
Grade }

විෂයය } විද්‍යාව
Subject }

පත්‍රය } I
Paper }

කාලය } 02 hour
Time }

නම :-

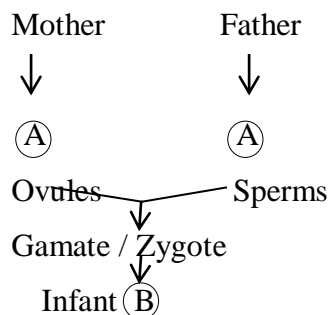
පංතිය :-

- Answer all the questions
- The answers should be marked on the paper provided to you by putting (x) mark inside the circle in front of the question number.

Part A

- Which one of the followings is a disaccharide ?
(I) Glactose (II) Glycogen
(III) Moltose (IV) Cellulose
- This is important to maintain the body temperature and water balance
(I) Carbohydrates (II) Proteins
(III) Vitamins (IV) Lipids
- The physical quantities that are mentioned only in Newton's second law of motion (not in the first law) are,
(I) Acceleration and mass (II) Mass and velocity
(III) Unbalanced force and mass (IV) Velocity and unbalanced force
- The electronic configuration of an atom which is in third period and third group of the periodic table is,
(I) 2,8,1 (II) 2,8,2 (III) 2,8,3 (IV) 2,8,4
- Select the answer only with scaler quantities,
(I) Velocity and acceleration (II) Speed and distance
(III) Acceleration and distance (IV) displacement and speed

- 6) Which nutrients should be contained in a diet given to a person who is suffering from anaemia,
- (I) Iron and Vitamin A (II) Iodine and vitamin A
 (III) Iodine and vitamin B (IV) Iron and Vitamin B
- 7) The diagram given below is about sexual reproduction. The methods of cell division represented by A and B should be,



- (I) Meiosis and Mitosis
 (II) Mitosis and Mitosis
 (III) Meiosis and Meiosis
 (IV) Mitosis and Meiosis

- 8) What is the accurate and deceleration? (negative acceleration)

- (I) ms^{-1} (II) ms^{-2}
 (III) $\text{m}^{-2} \text{s}$ (IV) sm^{-1}

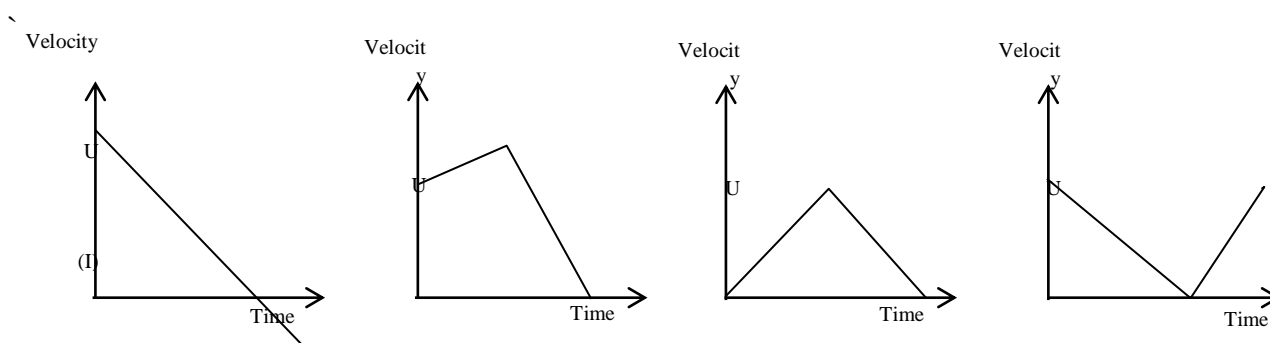
- 9) Which one of the following does not effect on limiting frictional force?

- (I) Perpendicular reaction (II) Nature of the surfaces
 (III) Area of the contact surface (IV) Force acting on surfaces

- 10) The form in which carbohydrate is available in the cell wall of the plant cells is,

- (I) Glycogen (II) Starch
 (III) Sucrose (IV) Cellulose

- 11) An object which was thrown over the top under the acceleration of gravity has an initial velocity of u . the velocity – time curve which describes the motion of object is,

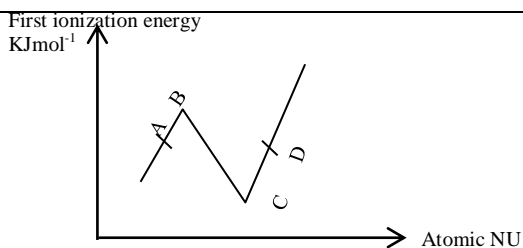


- 12) An atom with 8 protons and 9 neutrons in its nucleus is correctly represent as,

- (I) ${}^8_9\text{O}$ (II) ${}^{17}_8\text{O}$ (III) ${}^8_{17}\text{O}$ (IV) ${}^9_8\text{O}$

- 13) A graph that indicates the relationship between the first ionization energy and atomic number of several consecutive elements is given below. The elements shown by A, B ,C and D can be,

- (I) He, Li, Be, B
- (II) Be, B, C, N
- (III) B, C, N, O
- (IV) F, Ne, Na, Mg



14) What is the organic compound that contains C, H, O, N and P?

- (I) Proteins
- (II) Lipids
- (III) Nucleic acids
- (IV) Carbohydrates

15) The elements which covers 10% of the mass of the human body is,

- (I) O
- (II) H
- (III) C
- (IV) N

16) The frictional force which is acting when there is relative motion between two objects/surfaces is,

- (I) Dynamic frictional force
- (II) Static frictional force
- (III) Limiting frictional force
- (IV) Maximum frictional force

17) The element which has the highest electro negativity according to the Pauling scale,

- (I) Cl
- (II) P
- (III) H
- (IV) F

18) If a bullet with mass of 10g is released from a gun with a velocity of 400 ms^{-1} the momentum of the bullet is,

- (I) 2 kgms^{-1}
- (II) 10 kgms^{-1}
- (III) 4 kgms^{-1}
- (IV) 8 kgms^{-1}

19) What is mean by one Newton (1 N) ,

- (I) The multiplication of acceleration and force
- (II) The force given to a unit mass to make unit acceleration.
- (III) The force acting on a unit area.
- (IV) The velocity within a unit time.

20) $\text{Co}(\text{NH}_2)_2$ is chemical formula of,

- (I) Urea
- (II) Sucrose
- (III) Ammonium dichromate
- (IV) Cobalt Nitrite

21) The chemical formula of Aluminum Oxide is,

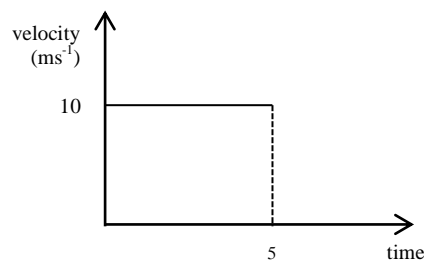
- (I) AlO_2
- (II) Al_2O_4
- (III) Al_3O_2
- (IV) Al_2O_3

- 22) Allotropes of carbon can be divided as crystalline and amorphous forms. Which one of the following answers includes only amorphous forms of carbon,
- (I) Diamond and Fullerene (II) Diamond and graphite
(III) Coal and charcoal (IV) Graphite and coal
- 23) The ion which has the electronic configuration of 'He' is, (He-2)
- (I) Cl^- (II) Li^+ (III) Ca^{2+} (IV) F
- 24) A force of 80N is exerted on an object. The mass of the object is 'm'. The object is moving with an acceleration of 'a' when the force is exerted on it. What change should be done to increase the acceleration of the object up to 4a,
- (I) The mass of the object should be decreased as $\frac{m}{4}$
(II) The mass of the object should be increased as 4m.
(III) A force of 100N should be exerted on the object
(IV) A force of 40N should be exerted on the object
- 25) Sulphur is well dissolved in,
- (I) Water H_2O (II) Organic solvents like CCl_4
(III) CS_2 (Carbon di sulphide) (IV) Sulphuric acid (H_2SO_4)
- 26) An instance where N_2 gas is used,
- (I) to fill thermometers
(II) to fill vehicle tyres
(III) as an additional gas to store highly reactive chemicals
(IV) All the above
- 27) Protium is an isotope of hydrogen. It is shown by,
- (I) ${}_1^1\text{H}$ (II) ${}_1^2\text{H}$ (III) ${}_1^3\text{H}$ (IV) ${}_1^4\text{H}$
- 28) An element is indicated as ${}_B^AX$ A and B indicates,
- (I) electronegativity and ionization energy
(II) Mass number and atomic number
(III) Period and group
(IV) Number of protons and neutrons
- 29) The average value of acceleration of gravity is 9.8ms^{-2} on the earth. It means,
- (I) The acceleration decrease in 9.8ms^{-2} in every second when an object falls down.
(II) The acceleration increases in 9.8ms^{-2} in every second when an object falls down.
(III) The velocity decreases in 9.8ms^{-1} in every second when an object falls down

(IV) The velocity increase in 9.8ms^{-1} in every second when an object falls down

30) The graph given below represent how the velocity of a motor car varies with the time, The acceleration of the motor car is ,

- (I) 0.5ms^{-2} (II) 0ms^{-2}
(III) 50ms^{-2} (IV) 02ms^{-2}



31) The carbohydrate which involves in transportation,

- (I) Sucrose (II) Glucose (III) Fructose (IV) Glycogen

32) The organism with 23 pairs of chromosomes in body cells,

- (I) Frog (II) Man (III) Anaconda (IV) Dinosarus

33) The vitamin that is necessary to absorb iron is,

- (I) Vitamin A (II) Vitamin B (III) Vitamin C (IV) Vitamin D

34) All the biological activities that are taking place inside a living cell are controlled by,

- (I) Chromosomes (II) Mitochondria
(III) Cell wall (IV) Nucleus

35) The velocity of an object has changed from 25ms^{-1} to 10ms^{-1} within 5s. The acceleration of the object within the given period of time is,

- (I) -3ms^{-2} (II) 4ms^{-2} (III) 5ms^{-2} (IV) $+3\text{ms}^{-2}$

36) The electronic configuration of element 'A' is 2, 8, 1. The element can be,

- (I) K (II) Na (III) H (IV) Li

37) A considerable amount of sodium hydroxide is mixed to a sample of food extraction and then mixed a few drops of copper sulphate. If dark purple color was observed in this activity, what kind of substance is available in the above extraction,

- (I) Glucose (II) Starch (III) Protein (IV) Lipids

38) Which one of following elements is a mettaloid?

- (I) O (II) C (III) N (IV) B

39) The planetary model about the atom was put forward by,

- (I) Rutherford (II) Neilbohr (III) Chadwik (IV) Thomson

40) The valency of hydronium ion (H_3O^+) is,

- (I) 4 (II) 3 (III) 2 (IV) 1